

## Criteria for visual inspection of a composite hose

A hose showing any of the following defects is deemed unsuitable for further use and should be withdrawn for service pending possible repair or replacement.



**A)**

Corrosion of the outer wire/50 % reduction of the outer wire caused by scuffing, chemical attack, rusting etc

**B)**

Serious displacement of the outer wire (More than 50% lateral movement of the hose pitch)

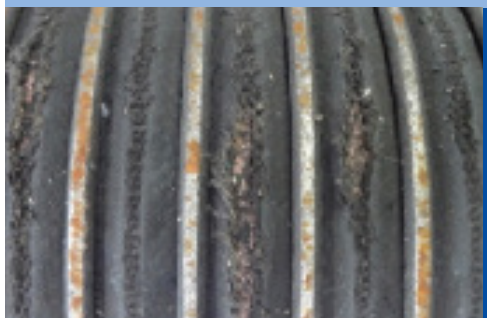


**C)**

Collapse of the inner wire

**D)**

Severe impact damage to the hose body (3 or more dents deeper than 6mm that cannot be knocked out)

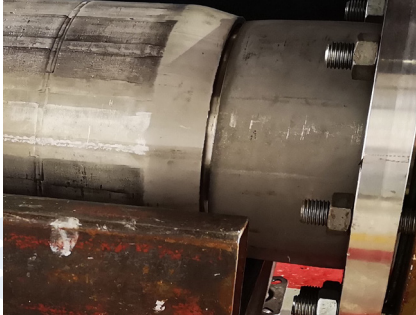


**E)**

Serious scuffing of the outer cover (Through to the inner reinforcing fabrics)

## Criteria for visual inspection of a composite hose

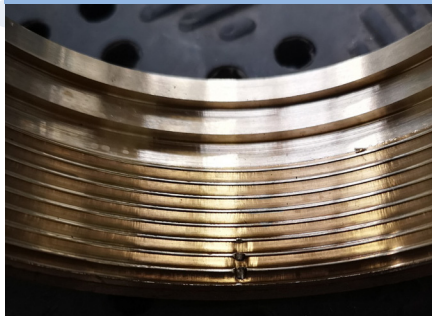
A hose showing any of the following defects is deemed unsuitable for further use and should be withdrawn for service pending possible repair or replacement

**F)**

End moving away from ferrule

**G)**

Severely corroded couplings can result in loss of continuity

**H)**

Damaged end couplings  
(Thread damage, distorted,  
oval, fractured etc)

**I)**

All threads to be checked with  
a spool adaptor (Must be a free  
running thread)

**J)**

All camlocks to be checked for  
distortion/cracks